

classic

boston Group 2

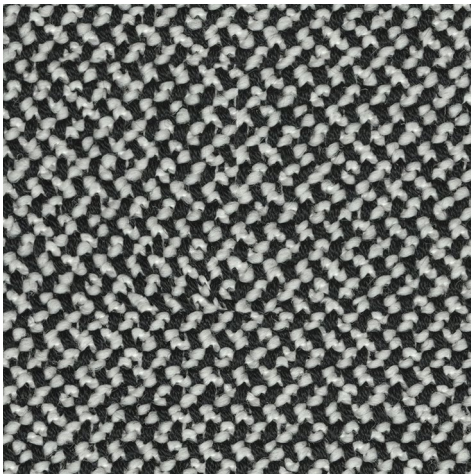
laser Group 2

miami Group 6

palermo Group 2

rio Group 6

Die Farbwiedergabe ist nicht farbverbindlich.
 Des nuances de teintes dues à l'impression papier sont possibles.
 The colour reproduction may vary.



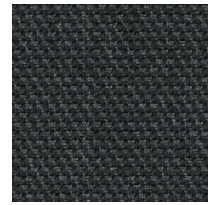
rio
6/6798



rio
6/6799



palermo
2/1898



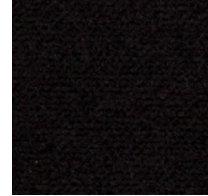
boston
2/3099



laser
2/6499



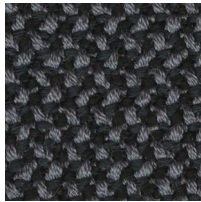
palermo
2/1899



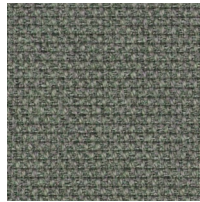
miami
6/6699



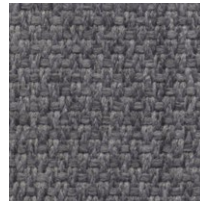
miami
6/6698



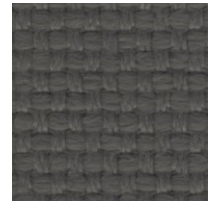
rio
6/6797



boston
2/3096



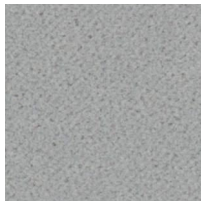
palermo
2/1896



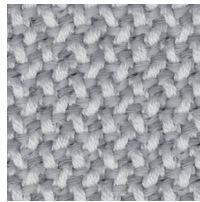
laser
2/6498



laser
2/6492



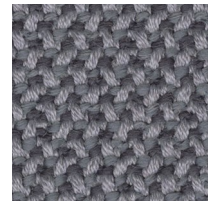
miami
6/6692



rio
6/6792



palermo
2/1895



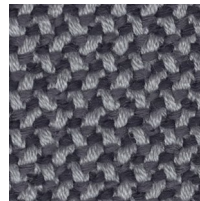
rio
6/6794



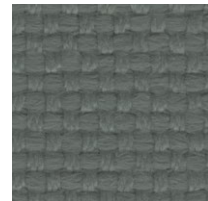
miami
6/6688



miami
6/6684



rio
6/6795



laser
2/6497



palermo
2/1885



palermo
2/1884



miami
6/6687



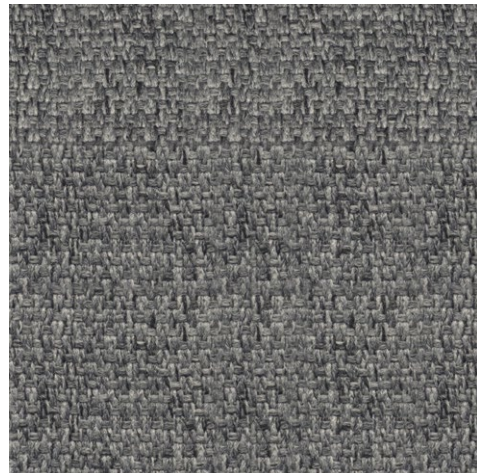
laser
2/6481



rio
6/6783



boston
2/3083

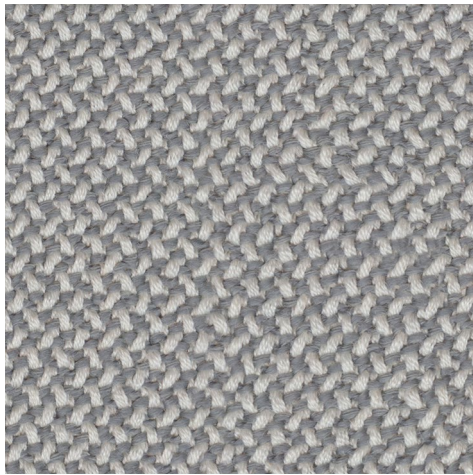


palermo
2/1883

Stoffgruppe . Tissu groupe . Fabric category

boston	2	miami	6	rio	6
laser	2	palermo	2		

Die Farbwiedergabe ist nicht farbverbindlich.
 Des nuances de teintes dues à l'impression papier sont possibles.
 The colour reproduction may vary.



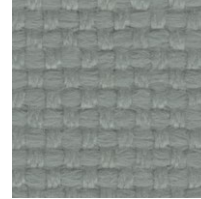
rio
6/6793



laser
2/6476



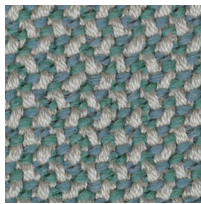
miami
6/6676



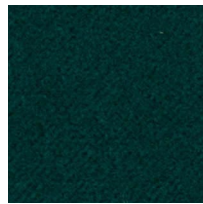
laser
2/6494



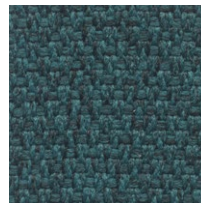
rio
6/6791



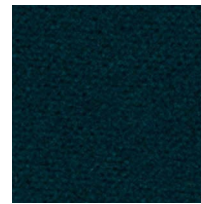
rio
6/6771



miami
6/6671



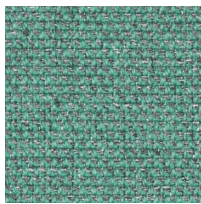
palermo
2/1871



miami
6/6672



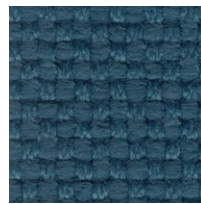
boston
2/3078



boston
2/3070



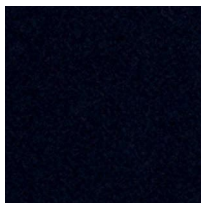
palermo
2/1870



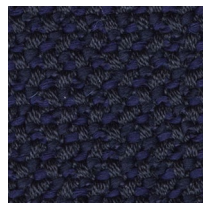
laser
2/6478



palermo
2/1878



miami
6/6679



rio
6/6779



boston
2/3079



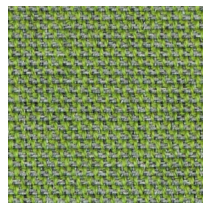
laser
2/6479



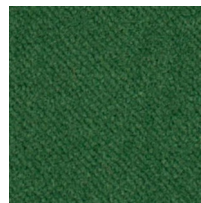
palermo
2/1879



rio
6/6762



boston
2/3062



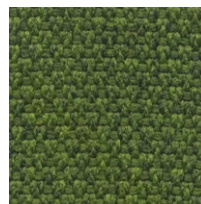
miami
6/6662



laser
2/6463



palermo
2/1864



palermo
2/1865

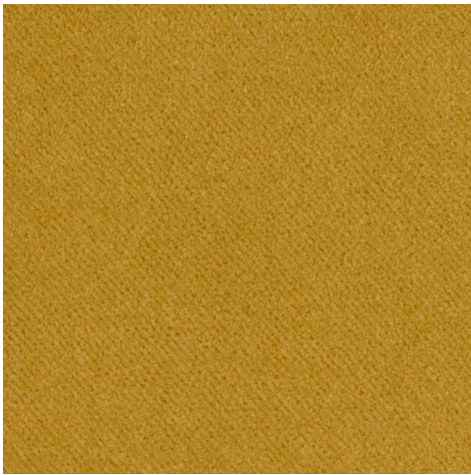


laser
2/6462

Stoffgruppe . Tissu groupe . Fabric category

boston	2	miami	6	rio	6
laser	2	palermo	2		

Die Farbwiedergabe ist nicht farbverbindlich.
 Des nuances de teintes dues à l'impression papier sont possibles.
 The colour reproduction may vary.



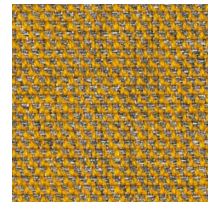
miami
6/6602



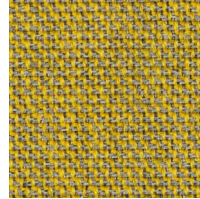
laser
2/6403



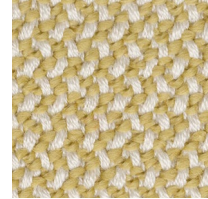
miami
6/6603



boston
2/3003



boston
2/3002



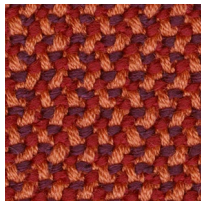
rio
6/6702



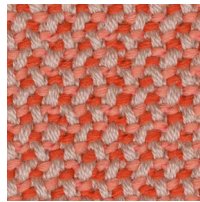
palermo
2/1846



laser
2/6446



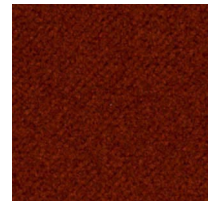
rio
6/6748



rio
6/6742



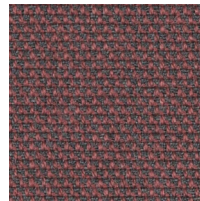
laser
2/6442



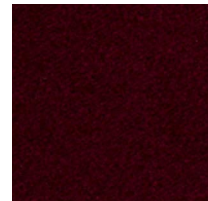
miami
6/6648



laser
2/6452



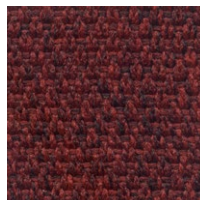
boston
2/3046



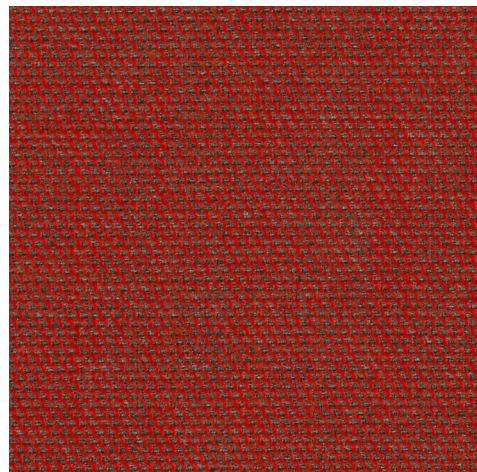
miami
6/6649



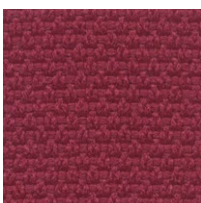
laser
2/6449



palermo
2/1849



boston
2/3048



palermo
2/1847



palermo
2/1848



laser
2/6448

Stoffgruppe . Tissu groupe . Fabric category					
boston	2	miami	6	rio	6
laser	2	palermo	2		



boston

Stoffgruppe 2

Material: 48 % Wool, 41 % post-consumer rec PES, 9 % PA, 2 % PES
Gewicht: ca. 370 g/lfm.
Breite: ca. 140 cm
Scheuerfestigkeit: 90.000 Touren
ISO 12947-2
Pilling: 4-5 ISO 12945-2
Lichtechtheit: 5-7 ISO 105-B02
Reibechtheit: 4/5 ISO 105x12 (wet/dry)
Flammenschutz: BS EN 1021 1&2, BS 5852 Crib 5, CA TB 117-2013, Class Uno
UNI 9175 Class 1 | EMME BS 476 Part 7 class1

Reinigung und Pflege:



Tissu groupe 2

Matière : 48 % laine, 41 % rec. post-consommation PES, 9 % PA, 2 % PES
Poids : env. 370 g/ml.
Largeur : env. 140 cm
Résistance à l'abrasion : 90 000 tours
ISO 12947-2
Boulochage : 4-5 ISO 12945-2
Résistance à la lumière : 5-7 ISO 105-B02
Résistance au frottement : 4/5 ISO 105x12 (humide/sec)
Inflammabilité : BS EN 1021 1&2, BS 5852 Crib 5, CA TB 117-2013, Classe Uno
UNI 9175 Classe 1 | EMME BS 476 Part 7 class1

Nettoyage et entretien :



Fabric category 2

Material: 48 % wool, 41 % post-consumer rec. PES, 9 % PA, 2 % PES
Weight: approx. 370 g/lm.
Width: approx. 140 cm
Abrasion resistance: 90,000 cycles
ISO 12947-2
Pilling: 4-5 ISO 12945-2
Lightfastness: 5-7 ISO 105-B02
Fastness to rubbing: 4/5 ISO 105x12 (wet/dry)
Flammability: BS EN 1021 1&2, BS 5852 Crib 5, CA TB 117-2013, Class Uno,
UNI 9175 Class 1 | EMME BS 476 Part 7 class1

Cleaning and care:



laser

Stoffgruppe 2

100% Polyester **Trevira CS**
Gewicht: 735 g/lfm. ± 5%
Breite: 140 cm ± 2%
Scheuerfestigkeit: 150.000 Touren ± 10% ISO 12947/2
Pilling: 5 ISO 12945/2
Lichtechtheit: ISO 105-B02 : 6
Reibechtheit: ISO 105-X12 : 4/5
Flammenschutz: UNI 9174 - 8456 Class C1, UNI 9175 Class 1 IM, DIN 4102 Class B1, NF 92501-7 Class M1, NF D 60013 Class AM18, EN 1021-1 & 2, BS Crib 5, BS 7176 Class Medium Hazard, EN 13773 Class 1, OENORM 3800-1 Class B1,Q1,TR1, California TB117, USA NFPA 701, USA NFPA 260, IMO Part 8 Upholstery

Reinigung und Pflege:



Tissu groupe 2

100% Polyester **Trevira CS**
Poids : 735 g/ml. ± 5%
Largeur : 140 cm ± 2%
Résistance à l'abrasion : 150 000 Martindale ± 10% tours
ISO 12947/2
Boulochage : 5 ISO 12945-2
Résistance à la lumière : niveau 6 (ISO 105-B02)
Résistance au frottement : 4/5 ISO 105x12
Classement au feu : UNI 9174 - 8456 Class C1, UNI 9175 Class 1 IM, DIN 4102 Class B1, NF 92501-7 Class M1, NF D 60013 Class AM18, EN 1021-1 & 2, BS Crib 5, BS 7176 Class Medium Hazard, EN 13773 Class 1, OENORM 3800-1 Class B1,Q1,TR1, California TB117, USA NFPA 701, USA NFPA 260, IMO Part 8 Upholstery

Nettoyage et entretien :



Fabric category 2

100% Polyester **Trevira CS**
Weight: 735 g/lm. ± 5%
Width: 140 cm ± 2%
Abrasion resistance: 150,000 Martindale ± 10% cycles
ISO 12947/2
Pilling: 5 ISO 12945-2
Lightfastness: level 6 (ISO 105-B02)
Fastness to rubbing: 4/5 ISO 105x12
Flammability: UNI 9174 - 8456 Class C1, UNI 9175 Class 1 IM, DIN 4102 Class B1, NF 92501-7 Class M1, NF D 60013 Class AM18, EN 1021-1 & 2, BS Crib 5, BS 7176 Class Medium Hazard, EN 13773 Class 1, OENORM 3800-1 Class B1,Q1,TR1, California TB117, USA NFPA 701, USA NFPA 260, IMO Part 8 Upholstery

Cleaning and care:



Generelle Reinigungshinweise für waschbare Stoffe:

Abnehmbare Bezüge können gewaschen werden. Bitte Pflegesymbole beachten. Weitere Hinweise finden Sie in unseren Reinigungs- und Pflegehinweisen unter www.brunner-group.com

Instructions générales de nettoyage pour les tissus lavables :

Les housses amovibles peuvent être lavées. Veuillez noter les symboles d'entretien. Vous trouverez de plus amples indications dans nos instructions de nettoyage et d'entretien à l'adresse www.brunner-group.com

General cleaning instructions for washable fabrics:

Removable covers can be washed. Please note the care symbols. For more information, see our cleaning and care instructions at www.brunner-group.com

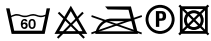


miami

Stoffgruppe 6

Material: 100% **Trevira CS**
 Gewicht: ca. 600g/lfm.
 Breite: ca. 140 cm
 Scheuerfestigkeit: 100.000 Touren
 ISO 12947-2
 Pilling: 5 ISO 12945-2
 Lichtechtheit: 5–8 ISO 105-B02
 Reibechtheit: 4/5 ISO 105x12 (wet/dry)
 Flammschutz: BS EN 1021 1&2,
 BS 5852 Crib 5, CA TB 117-2013,
 Class Uno UNI 9175 Class 1 I EMME,
 DIN 4102 - B1, NFP 92-503/504/505 M1,
 AM 18 - NF D 60-013-(only for fabric),
 CA TB 117-2013

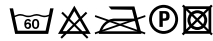
Reinigung und Pflege:



Tissu groupe 6

Matière : 100 % **Trevira CS**
 Poids : env. 600 g/ml.
 Largeur : env. 140 cm
 Résistance à l'abrasion : 100 000 tours
 ISO 12947-2
 Boulochage : 5 ISO 12945-2
 Résistance à la lumière : 5–8 ISO 105-B02
 Résistance au frottement : 4/5 ISO 105x12
 (humide/sec)
 Inflammabilité : BS EN 1021 1&2, BS 5852 Crib
 5, CA TB 117-2013, Classe Uno UNI 9175 Classe
 1 I EMME, DIN 4102 - B1, NFP 92-503/504/505
 M1, AM 18 - NF D 60-013-(uniquement pour
 le tissu), CA TB 117-2013

Nettoyage et entretien :



Fabric category 6

Material: 100% **Trevira CS**
 Weight: approx. 600 g/lm.
 Width: approx. 140 cm
 Abrasion resistance: 100,000 cycles
 ISO 12947-2
 Pilling: 5 ISO 12945-2
 Lightfastness: 5–8 ISO 105-B02
 Fastness to rubbing: 4/5 ISO 105x12 (wet/dry)
 Flammability: BS EN 1021 1&2, BS 5852 Crib 5,
 CA TB 117-2013, Class Uno UNI 9175 Class 1 I
 EMME, DIN 4102 - B1, NFP 92-503/504/505 M1,
 AM 18 - NF D 60-013-(only for fabric),
 CA TB 117-2013

Cleaning and care:



palermo

Stoffgruppe 2

Material: 100 % Polyester **Trevira CS**
 Gewicht: 480 g/lfm. ± 5%
 Breite: 140 cm ± 2%
 Scheuerfestigkeit: 100.000 Touren
 ISO 12947/2
 Pilling: 5 ISO 12945/2
 Lichtechtheit: ISO 105-B02 : 6
 Reibechtheit: ISO 105-X12 : 4/5
 Leichte Farbunterschiede sind
 zwischen zwei Partien als normal zu
 betrachten.
 Flammschutz: UNI 9174 - 8456 Class C1,
 UNI 9175 Class 1 IM, DIN 4102 Class B1,
 NF 92501-7 Class M1, NF D 60013 Class AM18,
 EN 1021-1 & 2, BS Crib 5, BS 7176 Class
 Medium Hazard, EN 13773 Class 1

Reinigung und Pflege:



Tissu groupe 2

Matériau : 100 % Polyester **Trevira CS**
 Poids : 480 g/ml. ± 5%
 Largeur : 140 cm ± 2%
 Résistance à l'abrasion :
 ISO 12947/2 : 100 000 tours Martindale
 Boulochage : 5 ISO 12945/2
 Solidité à la lumière : ISO 105-B02 : 6
 Résistance au frottement : ISO 105-X12 : 4/5
 De légères nuances de teintes entre
 2 échantillons sont considérées
 comme normales.
 Classement feu : UNI 9174 - 8456 Class C1,
 UNI 9175 Class 1 IM, DIN 4102 Class B1,
 NF 92501-7 Class M1, NF D 60013 Class AM18,
 EN 1021-1 & 2, BS Crib 5, BS 7176 Class
 Medium Hazard, EN 13773 Class 1

Nettoyage et entretien :



Fabric category 2

Material: 100 % Polyester **Trevira CS**
 Weight: 480 g/lm. ± 5%
 Width: 140 cm ± 2%
 Abrasion resistance: (Martindale)
 ISO 12947/2: 100,000 cycles
 Pilling: 5 ISO 12945/2
 Light fastness: ISO 105-B02 : 6
 Fastness to rubbing: ISO 105-X12 : 4/5
 Slight colour differences between one
 lot and another have to be considered
 within commercial tolerance.
 Flammability: UNI 9174 - 8456 Class C1,
 UNI 9175 Class 1 IM, DIN 4102 Class B1,
 NF 92501-7 Class M1, NF D 60013 Class AM18,
 EN 1021-1 & 2, BS Crib 5, BS 7176 Class
 Medium Hazard, EN 13773 Class 1

Cleaning and care:

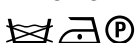


rio

Stoffgruppe 6

Material: 95% Wolle 5% PA
 Gewicht: ca. 870 g/lfm.
 Breite: ca. 140 cm
 Scheuerfestigkeit: 100.000 Touren
 ISO 12947-2
 Pilling: ≥ 4–5 ISO 12945-2
 Lichtechtheit: ≥ 5 ISO 105-B02 (Garnfärbung)
Reibechtheit
 Flammschutz: CAL TB 117 – 2013, DIN EN
 1021-1/-2, BS 5852 Part 1: 1979, UNI 9175 1 IM,
 ÖNORM B1/Q1, IMO 2014/90/EU

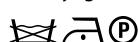
Reinigung und Pflege:



Tissu groupe 6

Matière : 95 % laine vierge 5% PA
 Poids : env. 870 g/ml.
 Largeur : env. 140 cm
 Résistance à l'abrasion : 100 000 tours
 ISO 12947-2
 Boulochage : ≥ 4–5 ISO 12945-2
 Résistance à la lumière : ≥ 5 ISO 105-B02
 (coloration fil)
Résistance au frottement
 Inflammabilité : CAL TB 117 – 2013, DIN EN
 1021-1/-2, BS 5852 Partie 1 : 1979, UNI 9175 1
 IM, ONORM B1/Q1, IMO 2014/90/EU

Nettoyage et entretien :



Fabric category 6

Material: 95% WV 5% PA
 Weight: approx. 870 g/lm.
 Width: approx. 140 cm
 Abrasion resistance: 100,000 cycles
 ISO 12947-2
 Pilling: ≥ 4–5 ISO 12945-2
 Lightfastness: ≥ 5 ISO 105-B02 (yarn dyeing)
Fastness to rubbing
 Flammability: CAL TB 117 – 2013, DIN EN
 1021-1/-2, BS 5852 Part 1: 1979, UNI 9175 1 IM,
 ONORM B1/Q1, IMO 2014/90/EU

Cleaning and care:

