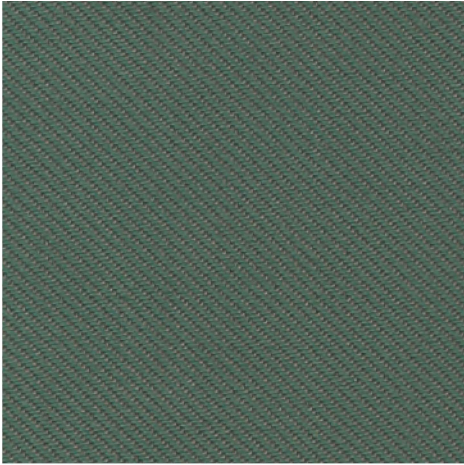


Textile Inspiration Card

SELMER

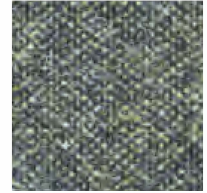
kvadrat



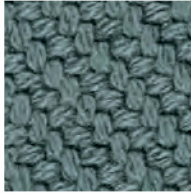
Relate
941



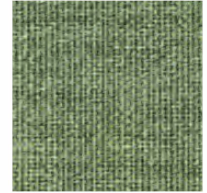
Re-wool
868



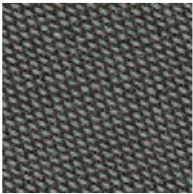
Melange Nap
951



Coda 2
962



Remix 3
933



Rime
981



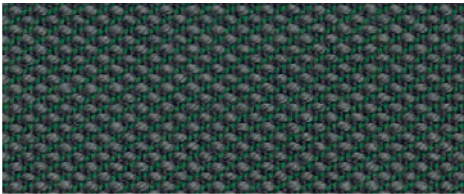
Divina 3
856



Divina MD
913



Divina 3
106



Steelcut Trio 3
966



Steelcut Trio 3
213



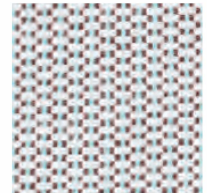
Reflect
994



Fiord 2
351



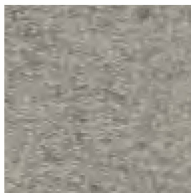
Hallingdal 65
220



Patio Outdoor
220



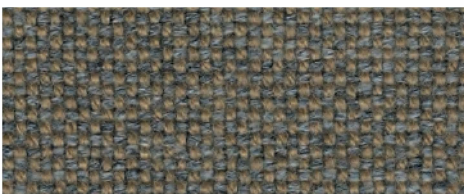
Melange Nap
241



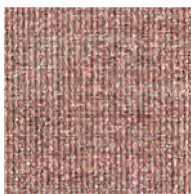
Divina MD
213



Divina MD
363



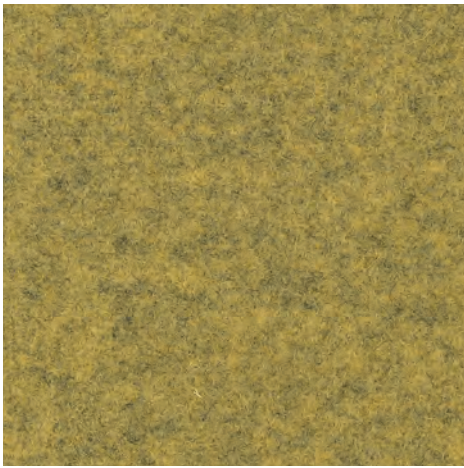
Hallingdal 65
227



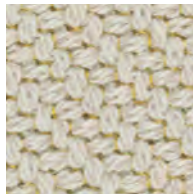
Canvas 2
356



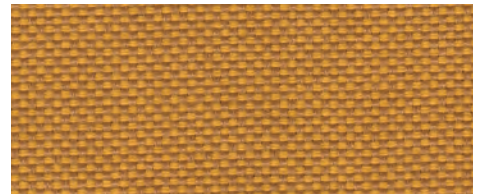
Mit einem Klick auf die Stofffelder gelangen Sie zur kompletten Farbpalette des jeweiligen Bezugstoffes.
En cliquant sur les cases de tissu, vous accédez à la palette complète des couleurs du tissu de revêtement correspondant.
Click on the fabric fields to see the complete colour palette of the respective upholstery fabric.



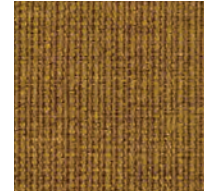
Divina Melange 3
427



Coda 2
422



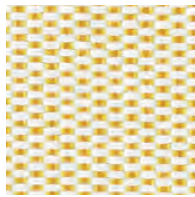
Field 2
463



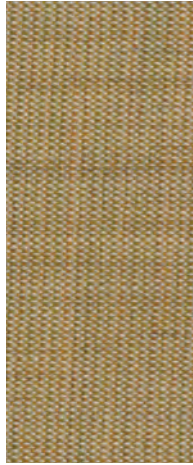
Canvas 2
424



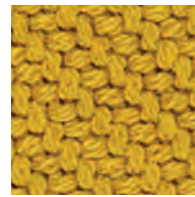
Hallingdal 65
407



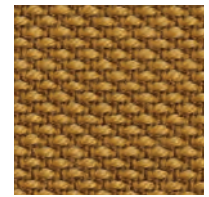
Patio Outdoor
410



Canvas 2
414



Coda 2
442



Steelcut Trio 3
453



Relate
401



Remix 3
252



Divina 3
462



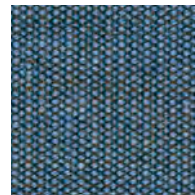
Divina MD
813



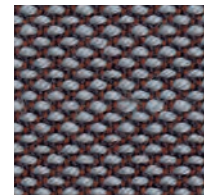
Remix 3
113



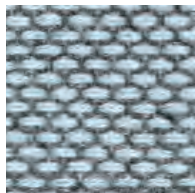
Remix 3
242



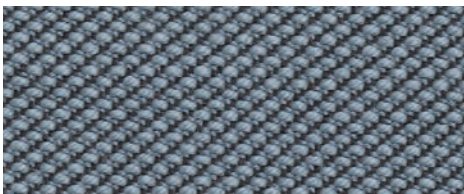
Canvas 2
734



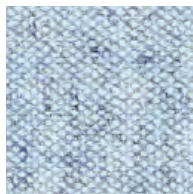
Steelcut Trio 3
336



Re-wool
718



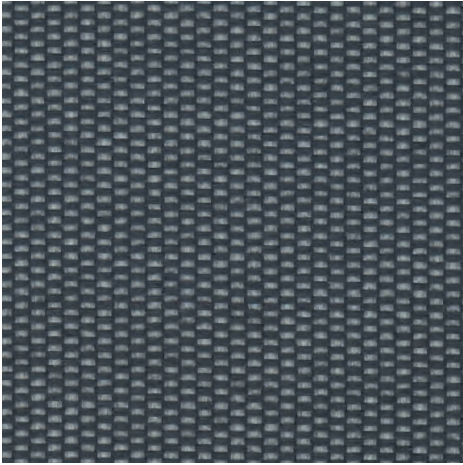
Steelcut Trio 3
713



Melange Nap
711



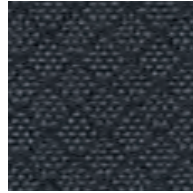
Remix 3
823



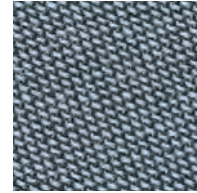
Patio Outdoor
170



Hallingdal 65
180



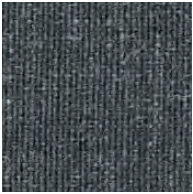
Jaali
171



Rime
741



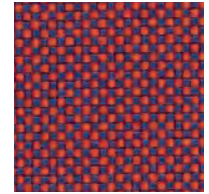
Divina Melange 3
180



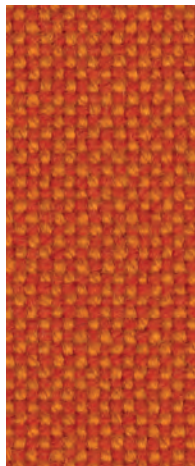
Remix 3
173



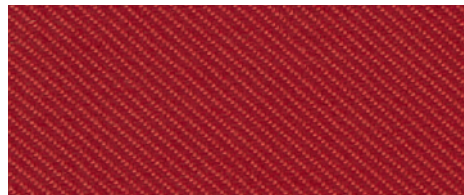
Divina 3
154



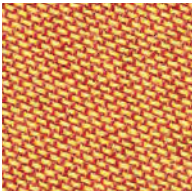
Field 2
673



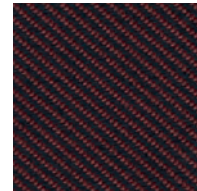
Hallingdal 65
590



Relate
641



Rime
451



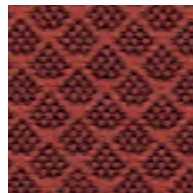
Relate
381



Divina 3
652



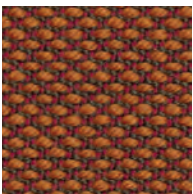
Divina 3
444



Jaali
561



Hallingdal 65
687



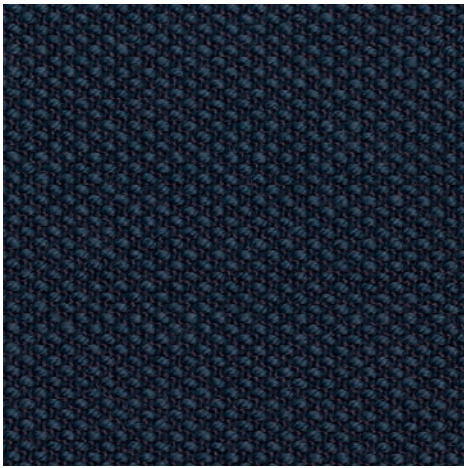
Steelcut Trio 3
576



Divina Melange 3
567



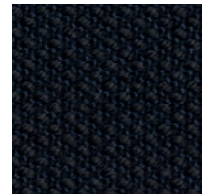
Fiord 2
581



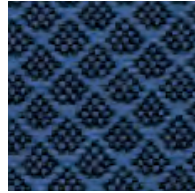
Steelcut Trio 3
796



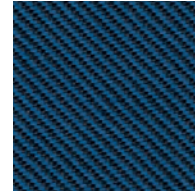
Remix 3
873



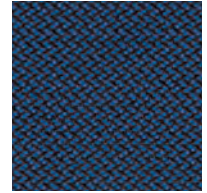
Steelcut Trio 3
195



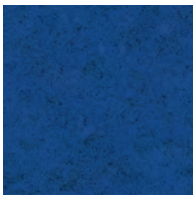
Jaali
781



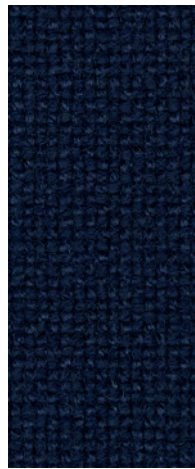
Relate
881



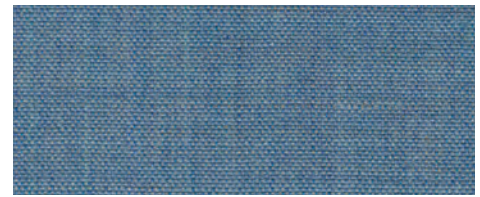
Revive 1
774



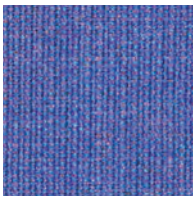
Divina Melange 3
757



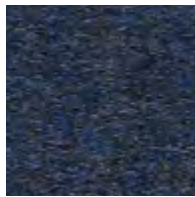
Hallingdal 65
764



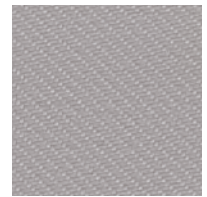
Remix 3
816



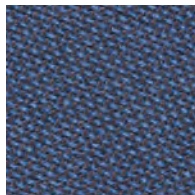
Canvas 2
666



Divina MD
753



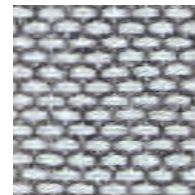
Reflect
104



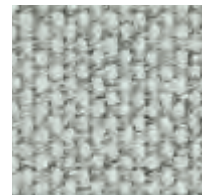
Rime
781



Divina Melange 3
120



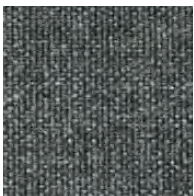
Re-wool
108



Hallingdal 65
110



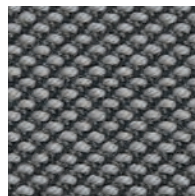
Melange Nap
691



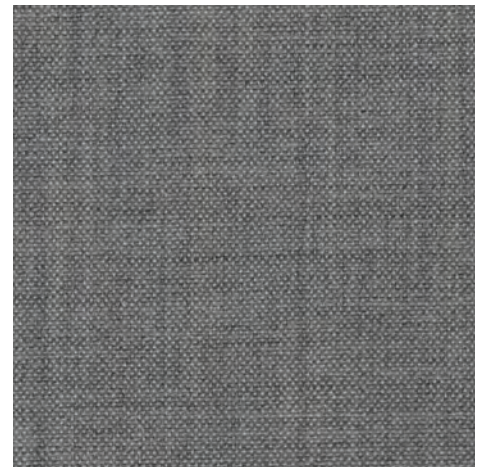
Remix 3
163



Remix 3
152



Steelcut Trio 3
133



Remix 3
123

	Melange Nap	Patio Outdoor	Re-wool	Reflect	Relate	Remix 3	Revive 1	Rime	Steelcut Trio 3
Stoffgruppe Tissu groupe Fabric group	4	6	4	2	2	2	2	6	6
Beschreibung	97% Schurwolle Kammgarn 3% Nylon	100% Trevira CS	45% recycled Wolle 45% Schurwolle, Kammgarn, 10% Nylon	100% post-consumer recycled Polyester	100% Trevira CS	90% Schurwolle, Kammgarn 10% Nylon	100% recycled Polyester FR	90% Schurwolle 10% Nylon	90% Schurwolle, Kammgarn 10% Nylon
Description	97% laine vierge, peigné 3% nylon	100% Trevira CS	45% laine recycle 45% laine vierge, peigné, 10% nylon	100% post-consumer polyester recyclé	100% Trevira CS	90% laine vierge, peigné 10% nylon	100% polyester FR recyclé	90% laine vierge 10% nylon	90% laine vierge, peigné 10% nylon
Description	97% new wool, worsted 3% nylon	100% Trevira CS	45% recycled wool 45% new wool, worsted, 10% nylon	100% post-consumer recycled polyester	100% Trevira CS	90% new wool, worsted 10% nylon	100% recycled polyester FR	90% new wool 10% nylon	90% new wool, worsted 10% nylon
Gewicht Poids Weight	440 g/m	560 g/m	540 g/m	430 g/m	450 g/m	420 g/m	420 g/m	580 g/m	770 g/m
Färbung Teinture Dye	Materialgefärbt Teinture en bourre Material dyed	Garngefärbt Teinture sur fil Yarn dyed	Garngefärbt Teinture sur fil Yarn dyed	Garngefärbt Teinture sur fil Yarn dyed	Garngefärbt Teinture sur fil Yarn dyed	Materialgefärbt Teinture en bourre Material dyed	Garngefärbt Teinture sur fil Yarn dyed	Garngefärbt Teinture sur fil Yarn dyed	Garngefärbt Teinture sur fil Material dyed
Scheuerfestigkeit Résistance à l'abrasion Abrasion									
Lichtechtheit Résistance à la lumière Lightfastness	6	6-7	5-7	5-7	5-7	5-7	5-7	5-7	5-7
Pilling Boulochage Pilling	3-4	4-5	4	4	4-5	4	4-5	4	4
Reibechtheit Résistance au frottement Fastness to rubbing	trocken 4-5 nass 4-5 sec 4-5 mouillé 4-5 dry 4-5 wet 4-5	trocken 4-5 nass 4-5 sec 4-5 mouillé 4-5 dry 4-5 wet 4-5	trocken 4-5 nass 4-5 sec 4-5 mouillé 4-5 dry 4-5 wet 4-5	trocken 5 nass 5 sec 5 mouillé 5 dry 5 wet 5	trocken 4-5 nass 4-5 sec 4-5 mouillé 4-5 dry 4-5 wet 4-5	trocken 4-5 nass 3-5 sec 4-5 mouillé 3-5 dry 4-5 wet 3-5	trocken 5 nass 4-5 sec 5 mouillé 4-5 dry 5 wet 4-5	trocken 4-5 nass 4-5 sec 4-5 mouillé 4-5 dry 4-5 wet 4-5	trocken 4-5 nass 3-5 sec 4-5 mouillé 3-5 dry 4-5 wet 3-5
Schallabsorption Absorption acoustique Sound absorption	0.55/Class D (glatt/à plat/flat) 0.8/Class B (gefaltet/plié/waved)	0.5/Class D (glatt/à plat/flat) 0.85/Class B (gefaltet/plié/waved)	0.5/Class D (glatt/à plat/flat) 0.75/Class C (gefaltet/plié/waved)	0.45/Class D (glatt/à plat/flat) 0.7/Class C (gefaltet/plié/waved)	0.5/Class D (glatt/à plat/flat) 0.7/Class C (gefaltet/plié/waved)	0.55/Class D (glatt/à plat/flat) 0.80/Class B (gefaltet/plié/waved)	0.55/Class D (glatt/à plat/flat) 0.8/Class B (gefaltet/plié/waved)	0.6/Class C (glatt/à plat/flat) 0.85/Class B (gefaltet/plié/waved)	0.7/Class C (glatt/à plat/flat) 0.95/Class A (gefaltet/plié/waved)
Flammschutz Normes au feu Flame resistance									
Pflege Entretien Care									
Umwelt Environnement Environment									



Brandschutz: EN 1021 1+2
Classement au feu: EN 1021 1+2
Flammability: EN 1021 1+2

Auslaufkollektion: Rime – Bei Bedarf Anfragen!

Discontinued collection: Rime – Please enquire if needed!



Brandschutz: DIN 4102 B1 schwerentflammbar
Classement au feu: DIN 4102 B1 difficilement inflammable
Flammability: DIN 4102 B1

Collection expirée: Rime – En cas de besoin prière de nous consulter !

Quality and environmental system accreditation according to ISO 9001 and ISO 14001.

* ACT® Registered Certification Marks

* Abrasion test results exceeding ACT performance guidelines are not an indicator of product lifespan. Multiple factors affect fabric durability and appearance retention.

EU Ecolabel: Encouraging the use of sustainable fibres. Durable and high quality. Hazardous substances restricted.

Contact and further information www.kvadrat.dk

canvas 2 Group 4

coda 2 Group 7

divina 3 Group 6

divina md Group 6

divina melange 3 Group 6

field 2 Group 2

fiord 2 Group 6

hallingdal 65 Group 6

jaali Group 6

melange nap Group 4

patio outdoor Group 6

re-wool Group 4

reflect Group 2

relate Group 2

remix 3 Group 2

revive 1 Group 2

rime Group 6

steelcut trio 3 Group 6